

OCTOBER 2025

# FALL FLAVORS IN EVERY BITE

## Fall Spiced Pumpkin Bread

<b>½ cup</b> all-purpose flour	<b>2 teaspoons</b> pumpkin pie spice	<b>½ cup</b> honey
<b>1¼ cup</b> whole-wheat flour	<b>½ teaspoon</b> salt	<b>2 cups</b> pumpkin puree
<b>1½ teaspoons</b> baking powder	<b>½ cup</b> melted margarine	<b>⅓ cup</b> olive oil
<b>1 teaspoon</b> baking soda	<b>½ cup</b> sugar	<b>2 eggs</b>
		<b>⅓ cup</b> chopped walnuts

**Heat** oven to 350 degrees F. **Mix** flours, baking powder, baking soda, pumpkin spice and salt; set aside. In a large mixing bowl, **whisk** together margarine, sugar, honey, pumpkin puree and olive oil. **Blend** in eggs. **Add** flour mixture. **Stir** until dry ingredients are moistened. **Spray** a 8-by-4 inch loaf pan with non-stick cooking spray. **Pour** batter into pan; **sprinkle** walnuts on top of batter. **Bake** for 1 hour. **Remove** from oven

and **cover** with foil. **Return** to oven and **bake** an additional 20 minutes or until toothpick inserted in center comes out clean. **Cool** for 10 minutes and **remove** from pan.

**Yield:** 16 slices

**Nutritional Analysis:** 220 calories, 13 g fat, 2 g saturated fat, 30 mg cholesterol, 270 mg sodium, 26 g carbohydrate, 1 g fiber, 14 g sugars, 4 g protein.

<https://fcs-hes.ca.uky.edu/sites/fcs-hes.ca.uky.edu/files/fall-spiced-pumpkin-bread-web-card.pdf>

*Jessica Hunley*  
Family & Consumer Sciences Agent  
Madison County  
[Hunley.jessica@uky.edu](mailto:Hunley.jessica@uky.edu)

**Cooperative Extension Service**

Agriculture and Natural Resources  
Family and Consumer Sciences  
4-H Youth Development  
Community and Economic Development

**MARTIN-GATTON COLLEGE OF AGRICULTURE, FOOD AND ENVIRONMENT**

Educational programs of Kentucky Cooperative Extension serve all people regardless of economic or social status and will not discriminate on the basis of race, color, ethnic origin, national origin, creed, religion, political belief, sex, sexual orientation, gender identity, gender expression, pregnancy, marital status, genetic information, age, veteran status, physical or mental disability or reprisal or retaliation for prior civil rights activity. Reasonable accommodation of disability may be available with prior notice. Program information may be made available in languages other than English. University of Kentucky, Kentucky State University, U.S. Department of Agriculture, and Kentucky Counties, Cooperating. Lexington, KY 40506



# CLUBS, GROUPS, AND CLASSES

**CREATIVE HANDS (Quilting):** 1st and 3rd Thursday @ month, 10am-1pm, Room 3, annex bldg. Bring your sewing machine and a sandwich and quilt along with us. Questions, call Linda Calico, 859-582-2252.

**GARDENERS OF MADISON COUNTY (Gardening):** 2nd Wed @ month, 1-3pm, check board for room assignment. No need to bring anything! All are welcome! For questions, call Kathryn Bowers, 859-619-0166.

**HAPPY SCRAPPERS (Scrapbooking, Paper Crafts, Crafting, Etc.):** 4th Wed @ month from 12-4pm, Room 1. Bring your work in progress and catch up. Questions, call Kathy Langosh, 720-243-0640.

**SEW MUCH OR SEW LITTLE:** 2nd and 4th Tuesdays, 9am-noon, Room 3, annex bldg.

**PICKLEBALL CLASSES:** The last class for this year is scheduled for Friday, October 31<sup>st</sup> @ 9-11am, weather permitting. You must call the office to register for the class: 859-623-4072 or email [hunley.jessica@uky.edu](mailto:hunley.jessica@uky.edu). If you do not have pickleball rackets for class, they can be furnished. Open court will begin again next Spring.

**PAPER KUTZ (Paper Crafting, Cards, Etc.):** 3rd Thursday @ month, 6-7:45pm, check board for room assignment. Questions, call Connie Lawson, 859-582-5505.

**GIFTS FROM THE HEART (Quilting)**  
Wednesdays 10AM to 4PM @  
Southside Church. Lancaster Rd Richmond.  
Contacts: Chris Hannah (859) 779-5761  
Terri Cooper (859) 866- 4380

**\$tretching  
YOUR  
Dollar**

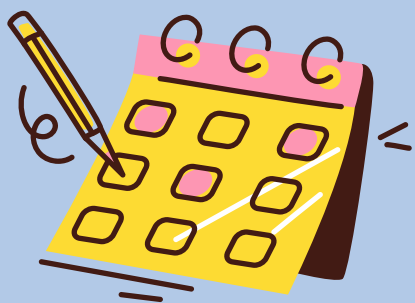


KEHA LEADER LESSON

**WEDNESDAY,  
OCTOBER 29TH  
11AM- NOON**

## A DESSERT FOR EVERY OCCASION

Victoria Faoro will share favorite and techniques for making desserts that will work for everything from a picnic lunch to a special occasional dinner. Cakes, cookies, ice cream, pies, puddings, fruits and more will be included. Gluten free and fat-free recipes will be among those presented. Techniques will be explained that will enable you to tackle any dessert recipe. A handout with full recipes will be provided. Class will meet on **10/15 at 10 AM.**



**It is time to renew  
your Homemaker  
Dues! Please bring a  
check for \$10 by the  
office or to your club  
treasurer.**

## SAVORY MEMORIES *Book Club!*

MADISON COUNTY EXTENSION HOMEMAKERS

November 10th

10 AM



Each club will be provided with a copy. Additional  
copies available upon request.

*Let's get reading!*

for more info: email Evonne Kincer @  
evkaykin@yahoo.com

## LAUGH AND LEARN

October 2025

## PLAYDATES

Don't miss out on this month's opportunities to get your  
littles out for some fun Playdates! All littles ages 0-5  
welcome!

10/17/25 Shannon Johnson Elementary @ 10AM

10/17/25 Waco Elementary @ 1:30PM

10/24/25 Glenn Marshall Elementary @ 9:30AM



Cooperative  
Extension Service

Madison  
County



## HOMEMAKERS REMINDER!

**\*\*Bluegrass Area  
Cultural Arts  
Competition will be  
on October 16<sup>th</sup>! Blue  
ribbon winners  
should have heard  
from Shawanna &  
Jessica and have their  
items back to the  
office by October  
14th!**





# MAKING MAPLE SYRUP IN KENTUCKY

**Tuesday, October 21, 2025 6:30-8:30 PM**

Madison County Cooperative Extension Service  
230 Duncannon Lane, Richmond, KY 40475

Join us for an introduction to making maple syrup in Kentucky. We will cover tree identification, tapping, processing, equipment and marketing, and utilization of maple syrup. Snacks will be provided.

**Call 859-623-4072 to register**



# GARDEN PALOOZA



**Saturday, October 18th, 2025  
9:30AM -12:00 PM**

Item drop off: 9:30am - 10:30am

Swap begins at 10:30am

Madison County Cooperative Extension Service  
230 Duncannon Lane, Richmond, KY 40475

**Join us for a garden item swap!**

**Bring any of the following to the swap: plants, gardening books (or magazines), tools, seeds or any other garden item.** Please do not bring chemicals, invasive or weedy plants, non-horticulture books.

In addition to the swap, there will be information about **growing fruit, vegetable gardening, local foods, composting and more!** We will also be accepting soil samples that day. We need two cups of soil to run a test. For more information, on soil testing, go to <https://madison.ca.uky.edu/horticulture>

**Everyone is welcome to attend this FREE event, even if you do not bring items to swap! Participants can sign up to win a rotary composter.**

If you plan to attend, have any questions or need more information, call 859-623-4072 or email [amanda.sears@uky.edu](mailto:amanda.sears@uky.edu).

\*Items cannot be dropped off prior to the event\*



Madison County FCS presents:

# Finger-knitting Workshop

Come join us for a fun, hands-on workshop where YOU will make a chunky yarn blanket/throw!

**Thursday Dec 11 1PM - 3PM**

**Bring Your Own Chunky Yarn!**  
(5-6 skeins)

Call the Madison County Extension Office to Sign up! (859) 623-4072

For more information contact Jessica  
@ [hunleyjessica@uky.edu](mailto:hunleyjessica@uky.edu)



Please join us for a **Cookie exchange!**

# Homemaker Christmas Brunch

**11 AM**

**Friday 5 December**

Madison Co. Extension Office Annex  
Call the office to RSVP!

(859) 623-4072

**Bring Side dish or Dessert- meat will be provided!**

**Bring an ornament and/ or 2 dozen cookies to play in the exchange games!**





# Farm City Banquet

**Monday, November 10, 2025 at 6:00 PM**  
**Madison County Cooperative Extension Office**

**Come join us in celebrating agriculture in Madison County!**

In addition to great food and awards, **Dr. Craig Wood**, Assistant Extension Director for Agriculture, Natural Resources and Horticulture at the University of Kentucky, will present a program called **"AI Applications in Agriculture"**.

Tickets go on sale October 2nd until November 4th and are \$20 each. Purchase online at: <https://madison-4-h.square.site/> or in person by check (payable to "Madison County 4-H Council") at the Madison County Cooperative Extension Office located at 230 Duncannon Lane in Richmond. For more information call 859-623-4072.



# 2026-2027 Leader Lesson Training Ideas

Name/ Club name \_\_\_\_\_

We are seeking ideas for Leader Lessons you would like for the 26-27 year. Please suggest as many as you like and return by December 19, 2025.

Lesson:	Suggestion
HOUSING	
FOOD & NUTRITION	
HEALTH & WELLNESS	
FINANCIAL MANAGEMENT	
FAMILY LIFE	
CLOTHING/SEWING	

 Cooperative  
Extension Service







# Best of The Bluegrass



## Bluegrass Area Extension Homemakers Annual Meeting

**Highlighting Scott County and the rich history of Kentucky.**

**Guest Speaker: Kentucky Chautauqua's Aunt Molly Jackson**

*Feisty, Funny, and completely fearless, Aunt Molly Jackson lived for nearly 50 years in the coal camps of Southeastern Kentucky, where her father, brothers, husband, and sons were miners. In the camps, Aunt Molly delivered babies, nursed the sick, and wrote and sang songs about the miners lives.*

**Friday, October 17<sup>th</sup>**

**At the Scott County Extension Office**

**1130 Cincinnati Rd. Georgetown, KY 40324**

**Cooperative  
Extension Service**

Agriculture and Natural Resources  
Family and Consumer Sciences  
4-H Youth Development  
Community and Economic Development

**MARTIN-GATTON COLLEGE OF AGRICULTURE, FOOD AND ENVIRONMENT**

Educational programs of Kentucky Cooperative Extension serve all people regardless of economic or social status and will not discriminate on the basis of race, color, ethnic origin, national origin, creed, religion, political belief, sex, sexual orientation, gender identity, gender expression, pregnancy, marital status, genetic information, age, veteran status, physical or mental disability or reprisal or retaliation for prior civil rights activity. Reasonable accommodation of disability may be available with prior notice. Program information may be made available in languages other than English. University of Kentucky, Kentucky State University, U.S. Department of Agriculture, and Kentucky Counties, Cooperating. Lexington, KY 40506



Disabilities  
accommodated  
with prior notification.



# Best of The Bluegrass

## Menu:

Option 1:

**Chicken Salad Sandwich**

Option 2:

**Ham and Cheese Sandwich**

Option 3:

**Veggie Sandwich**

Every meal comes with pasta salad, chips, and a cookie.

## Please Join Us

**When:**

Friday, October 17<sup>th</sup>

**Where:**

The Scott County Extension Office  
1130 Cincinnati Rd.  
Georgetown, KY 40324

**Time:**

9:30 AM Registration and Morning Refreshments

10:00 Call to Order

**Cost \$15.00**  
**Per Person**

**Registration Deadline:**  
**October 3, 2025**

For questions, contact Alivia Stevens at (502)863-0984 or [alivia.faris@uky.edu](mailto:alivia.faris@uky.edu)



*Bluegrass Area Extension Homemakers Annual Meeting Registration*

Complete and return by **October 3, 2025** to your County Extension Office with your check payable to Madison County Extension Homemakers.

Name: \_\_\_\_\_ Phone: \_\_\_\_\_

Email: \_\_\_\_\_ Club Name: \_\_\_\_\_

Mailbox member: \_\_\_\_\_ Guest: \_\_\_\_\_

Lunch Selection: ☐ Chicken Salad ☐ Ham and Cheese ☐ Vegetarian